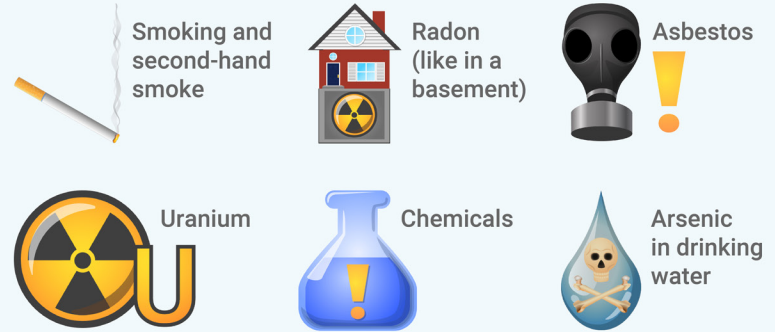


# WHAT IS NON-SMALL CELL LUNG CANCER (NSCLC)?

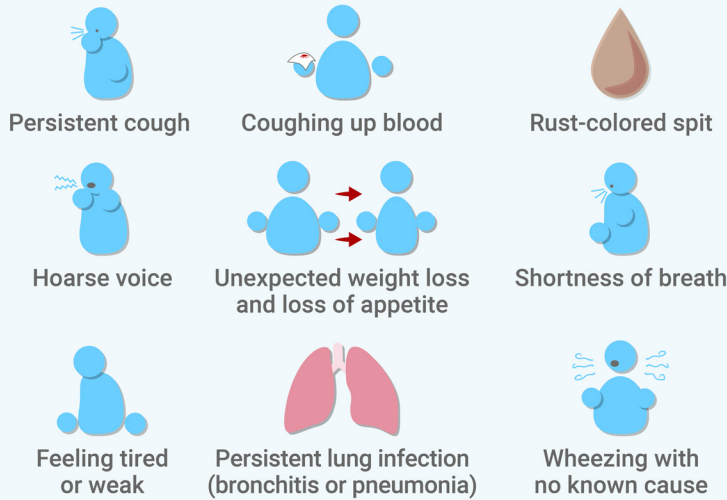
NSCLC is the **MOST COMMON TYPE** of lung cancer.



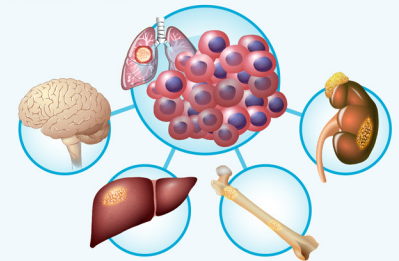
Limit your exposure to these **RISK FACTORS**:



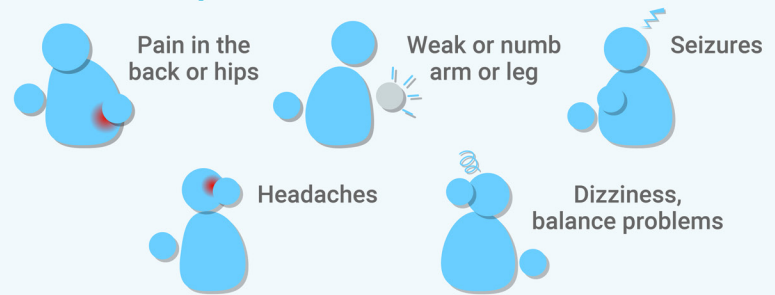
Symptoms of NSCLC are **NOT SPECIFIC** and are more **likely caused by something that's not cancer**. Possible symptoms of NSCLC are:



A cancer that **SPREADS** to another site or organ is called a **METASTASIS**.



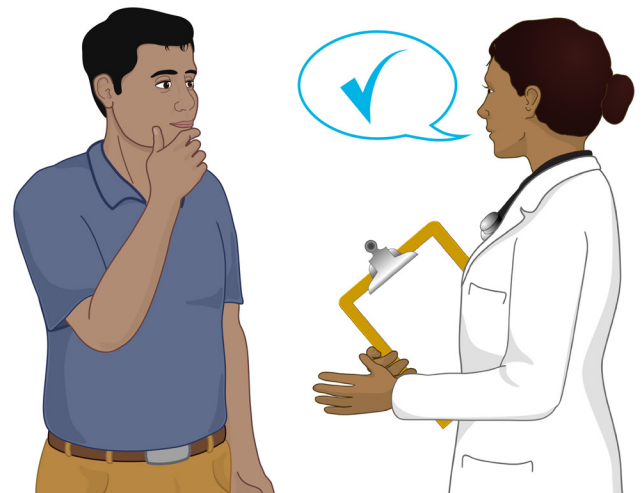
Symptoms that NSCLC has spread:



**BASIC WAYS** to **treat NSCLC** are:



Discuss **TREATMENT OPTIONS** with your doctor and **make a plan together**.



For more information visit:  
[YouAndLungCancer.com](http://YouAndLungCancer.com)

Developed by A Breath of Hope Lung Foundation and Mechanisms in Medicine Inc.