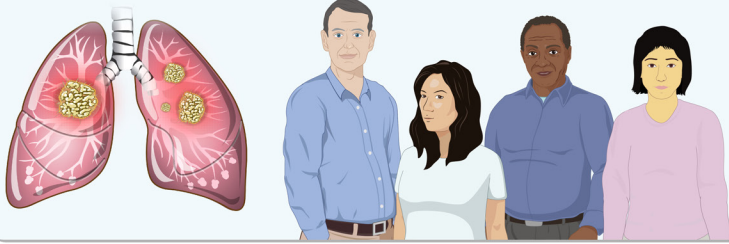


UNDERSTANDING CLINICAL TRIALS IN LUNG CANCER

Lung cancer clinical trials are research studies in which people volunteer to help test **new treatments, procedures**, or ways to **diagnose** or **screen** for lung cancer. There are **4 phases of clinical trials**. Ask your doctor about risks and benefits of joining a phase 1, 2, 3, or 4 clinical trial. The knowledge gained from clinical trials will **benefit people in the future**.

Phase 1: Tests a new treatment in a **small group of volunteers** to learn about safety and side effects.



Phase 2: Tests for effectiveness and side effects in a **larger group of volunteers** and gathers more information on safety.



Phase 3: Tests the treatment or procedure with **hundreds of volunteers** to confirm how well it works and compare it with available treatments.



Phase 4: Tests are done after the new drug or **treatment is approved** to continuously monitor safety, effectiveness, and side effects.



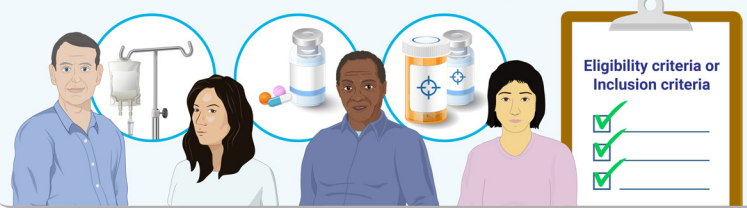
Importance of informed consent

The process of learning about the trial and then signing an agreement is called **informed consent**.



Importance of eligibility criteria

Each clinical trial has rules about who can participate. In research, these rules are called **eligibility criteria**.



Benefits and risks of taking part in a clinical trial



Benefits: Try drugs, treatments, or procedures that are not yet available to the public.

Risks: You may experience unwanted side effects.

Safety: It is unethical to give a patient a placebo as the only therapy on a trial if there are already approved standard treatment options.

How can I join a lung cancer clinical trial?



Ask your doctor about joining a clinical trial. You can ask any time before or during treatment.

You can also search online for clinical trials in lung cancer by visiting:

- ClinicalTrials.gov
- A Breath of Hope Lung Foundation abreathofhope.org/clinical-trials
- ResearchMatch.org

Please note: This information is not intended to be a substitute for professional medical advice. Always consult your doctor about any health-related questions.

- References:
1. U.S. National Institutes of Health. The Basics. NIH Clinical Research Trials and You. Available at: www.nih.gov/health-information/nih-clinical-research-trials-you/basics
 2. A Breath of Hope Lung Foundation and Mechanisms in Medicine Inc.: You And Lung Cancer. Available at: www.YouAndLungCancer.com



For more information visit:
YouAndLungCancer.com

Developed by A Breath of Hope Lung Foundation and Mechanisms in Medicine Inc.

